

GLORY

GFS-200 SERIES

New Generation Note Counter/Sorter



EFFICIENCY AND SAVING COSTS ARE CRITICAL BUSINESS DRIVERS FOR CASH HANDLING ORGANISATIONS TODAY

**BANK
BRANCHES**



RETAILERS

**CASH
CENTRES
AND CIT
COMPANIES**



CASINOS

THE CHALLENGES FOR TELLER POSITIONS AND CASH HANDLING TRENDS



OPTIMISATION OF COSTS

Any workforce in any industries is under pressure of getting more from less, reducing the volume of idle cash, while also meeting strict SLAs.



LOCALISATION

Cash handling tends to be de-centralised to save on outsourced expenses including shipping costs and cash handling commission. The local recycling of cash at the point of sale, and self-sufficiency of managing their cash effectively are the challenges for tellers.



REGULATION

Regulations/criteria for cash handling especially for recirculation of banknotes and counterfeited/composite notes are steadily increasing throughout the globe.

TELLERS ARE INCREASINGLY NEED TO DEAL WITH:



Balancing/verification of deposits



Elaborately counterfeited/composite banknotes



Fitness sorting to regulatory standards



Multiple currencies



Serial number recording or comparison

ALL-IN-ONE DESKTOP FITNESS VALUE COUNTING



High-speed & smooth deposit processing



Reliable counterfeit detection



Reliable repeatable fitness sorting *



Multi-currency handling



Serial number recording or comparison



ALL-IN-ONE DESKTOP FITNESS VALUE COUNTING



GFS-200 provides tellers with a compact, efficient and fast cash handling solution. GFS-200 meets virtually all cash handling needs of teller positions from bank branches, retail, cash centre, to exchange bureau and casinos.

PRODUCT INTRODUCTION

GFS-200 Series



ALL NEW DESIGN, NEW FEATURES

Note feeder

500 notes – 1,000 notes with optional note guides

Display

Large 4.3" colour touch screen

Advanced sensors

With enhanced fitness sorting, authentication capabilities.
Full width mechanical tape detection (option)

Speed

Piece counting 1,300 npm
Authentication 1,200 npm
Fitness /OCR 1,000 npm

Currencies

Standard supply 3 currencies
Capacity up to 40 currencies

Reject stacker

Up to 100 notes

Banknote size range

Width: 100 mm – 185 mm
Length: 55 mm – 85 mm

Main stacker

Up to 250 notes

Serial number

Serial number OCR and comparison at 1,000 npm



EXCELLENT USER EXPERIENCE



The latest and clear touch screen interface makes operation simpler.

- Note data can be displayed for operators to review
- Hard keys for frequently used functions
- Function keys can be configured to operator's needs
- Local Languages will be available

Intuitive interface minimises operator training time

ALL NEW DESIGN, NEW FEATURES



**ALL NEW ELECTRONICS
and DETECTORS**

Latest technology improving
speed and reliability

ALL NEW DESIGN, NEW FEATURES



Connectivity

Standard:

1. USB Host
2. USB Slave
3. RS232 DIN
4. Remote display
5. LAN
6. Micro SD card

EASY MAINTENANCE AND JAM RECOVERY



Roller transport with no belts.
Improves durability

RELIABLE TRANSACTIONS



1. Dual CIS to scan both sides of the banknote
2. 8 magnetics sensors (6 are TMR)
3. Ultraviolet reflectance
4. Ultraviolet fluorescence
5. Full width mechanical tape detection (fitness version only)

RELIABLE TRANSACTIONS



Advanced bill validator giving full-width images on both sides of the banknote in high resolution.
Produces five images which are used for authentication and fitness sorting that provides,

- The most reliable counterfeit detection
- Lower reject rates
- Better fitness repeatability

The highest level of recognition minimises processing times

RELIABLE TRANSACTIONS

TOTAL		SERIAL		(1/2)
NO.	DENOM.	TEXT	IMAGE	
1	11	B22769345F	B22769345F	
2	11	K20991804C	K20991804C	
3	11	B54063606M	B54063606M	
4	11	B22769378F	B22769378F	
5	11	B22769305F	B22769305F	
6	11	K20991802C	K20991802C	
7	11	B10260637F	B10260637F	
8	11	B24642811L	B24642811L	

Complete images of banknote realises:

- Recognition of banknote serial numbers, in four positions, without reducing count speed
- Dual serial number verification to detect composite counterfeit notes
- Flexible output; print out hard copies of the serial number data or send OCR data to a connected PC



Print

Serial Result	
1	B22769345F
2	K20991804C
3	B54063606M
4	B22769378F
5	B22769305F
6	K20991802C
7	B10260637F
8	B24642811L



Upload

Industry-leading level of SNR delivers advanced cash handling processes

GFS-200 SUMMARY OF KEY FUNCTIONS

- Modern touch screen interface
- High speed
 - 1,300 piece count
 - 1,200 authentication,
 - 1,000 OCR and fitness
- Multi currency up to 40 pattern sets
 - 80 with extended memory
- Count and authenticate multiple currencies simultaneously
- Full width tape detection with high sensitivity (optional)
- CashInsight Bridge connectivity
- Cheque scanning and TiTo functions in road map



QUALITY



GLORY QUALITY TESTING



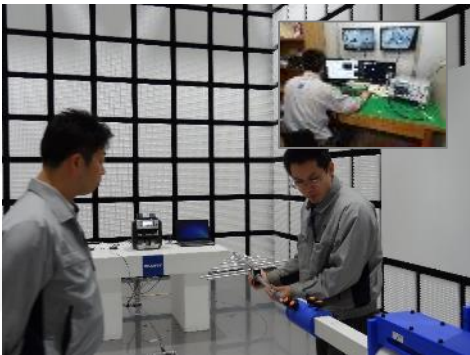
Endurance test by robot



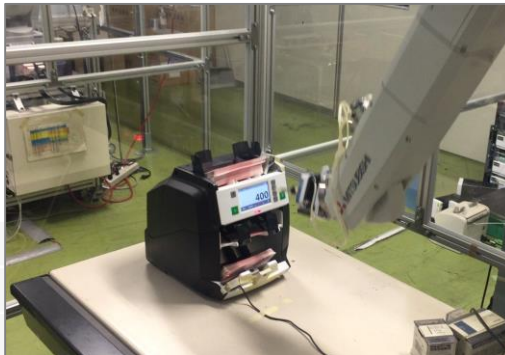
Dust ingress testing



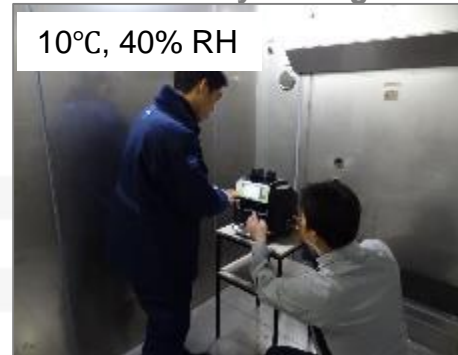
High temperature and humidity testing



EMC testing



Testing - video



Low temperature and humidity testing

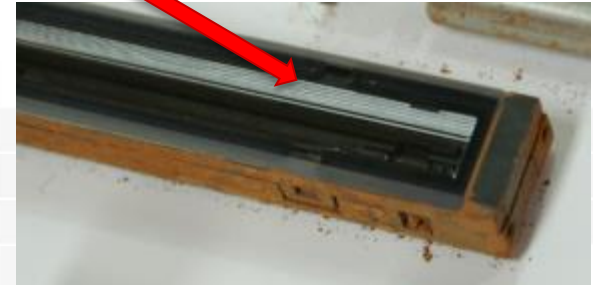
DUST INGRESS TESTING



Components sealed in bag
immersed in dust.
Agitated three times a day
for seven days.



No Dust Ingress



PRODUCT SUMMARY



GFS-200 SERIES SUMMARY | SPRINT

	FUNCTION/FEATURE	CUSTOMER VALUE
S PEED	High-speed processing giving excellent throughputs	High-speeds reduce processing times at the front desk allowing tellers to spend more time with customers. In cash centres, higher volumes can be processed with the same number of staff.
P ERFORMANCE	Detection system allows better detection of counterfeit and composite notes	Allows Banks to be compliant with national standards and, in some regions, reduces penalty charges for missed counterfeit notes.
R ELIABILITY	Design gives greater reliability giving greater uptime	Greater reliability means more uptime and greater overall note throughputs.
I NTUITIVE	Intuitive operator interface makes operation simpler	Simple, intuitive interface reduces operator training times and allows greater flexibility for using staff deployment.
N EW TECHNOLOGY	Latest technology ensures reliability and speed improvements	Latest technology gives greater future-proofing and performs better than older technology safeguarding investment .
T RUSTED	Tested by GLORY QA department to ensure GLORY quality	GLORY assured quality gives confidence that the machine will deliver a reliable performance.

MODEL COMPARISON

GFS-220

Vs.

GFS-1XX and Ntegra Plus

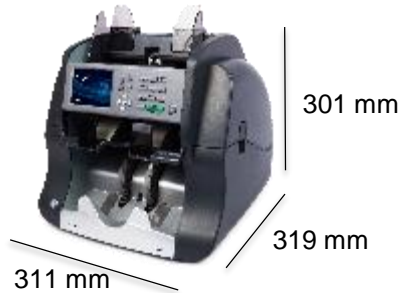
GFS-220F

Vs.

USF-5X and Ntegra Pro



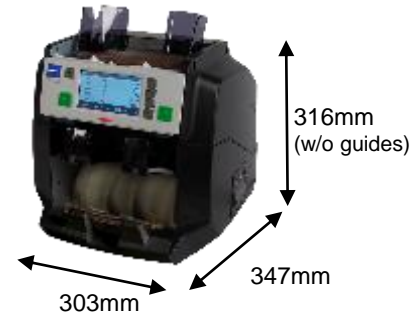
MACHINE COMPARISON | NON-FITNESS



Ntegra Plus



GFS-1XX



GFS-200 Series

Speed Piece Counting	1,200 npm	900 npm	1,300 npm
Speed Authenticating	1,000 npm	900 npm	1,200 npm
Speed Serial No. OCR	N/A	600 npm	1,000 npm
Display	Colour LCD	Monochrome LCD	4.3" colour touchscreen
Hopper	500 notes	300 notes	500 notes 1,000 with optional guides
Stacker pocket	250	200	250
Reject pocket	100	20	Up to 100
Printer	Internal or external	External	Internal or external
Remote upgrade	Yes	Yes	Yes
Max. No. of currencies	10	7	40

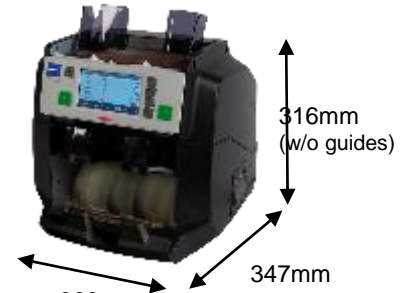
MACHINE COMPARISON | FITNESS



Ntegra Pro



USF-5X



GFS-200 Series

Speed Piece Counting	1,200 npm	720 npm	1,300 npm
Speed Authenticating	1,000 npm	720 npm	1,200 npm
Speed Serial No. OCR	600 npm	650 npm	1,000 npm
Speed fitness sorting	800 -1,000 npm	720 npm	1,000 npm
Display	Colour LCD	Monochrome LCD	4.3" colour touchscreen
Hopper	500 notes	300 / 500 notes (depends on model)	500 notes 1,000 with optional guides
Stacker pocket	250	200	250
Reject pocket	100	100	Up to 100
Printer	Internal or external	External	Internal or external
Remote upgrade	Yes	Yes	Yes
Max. No. of currencies	10	7 / 16 (depends on model)	40

CONFIGURATION AND ORDERING



GFS-200 SERIES

Two Basic Models

- GFS-220 Standard (non-fitness)
- GFS-220F Fitness

Hardware Options

Internal Printer

PRODUCT CODES

Description	With connectivity	With connectivity and internal printer
Standard model	GFS-220-C	GFS-220-CP
Fitness Model	GFS-220F-C	GFS-220F-CP

Firmware options that need to be specified on the order

Currencies required – 3 as standard, local, EUR, USD

Dual user

Auto mixed currency

OCR

WHERE DO YOU
WANT TO BE
TOMORROW?

How can we help?

